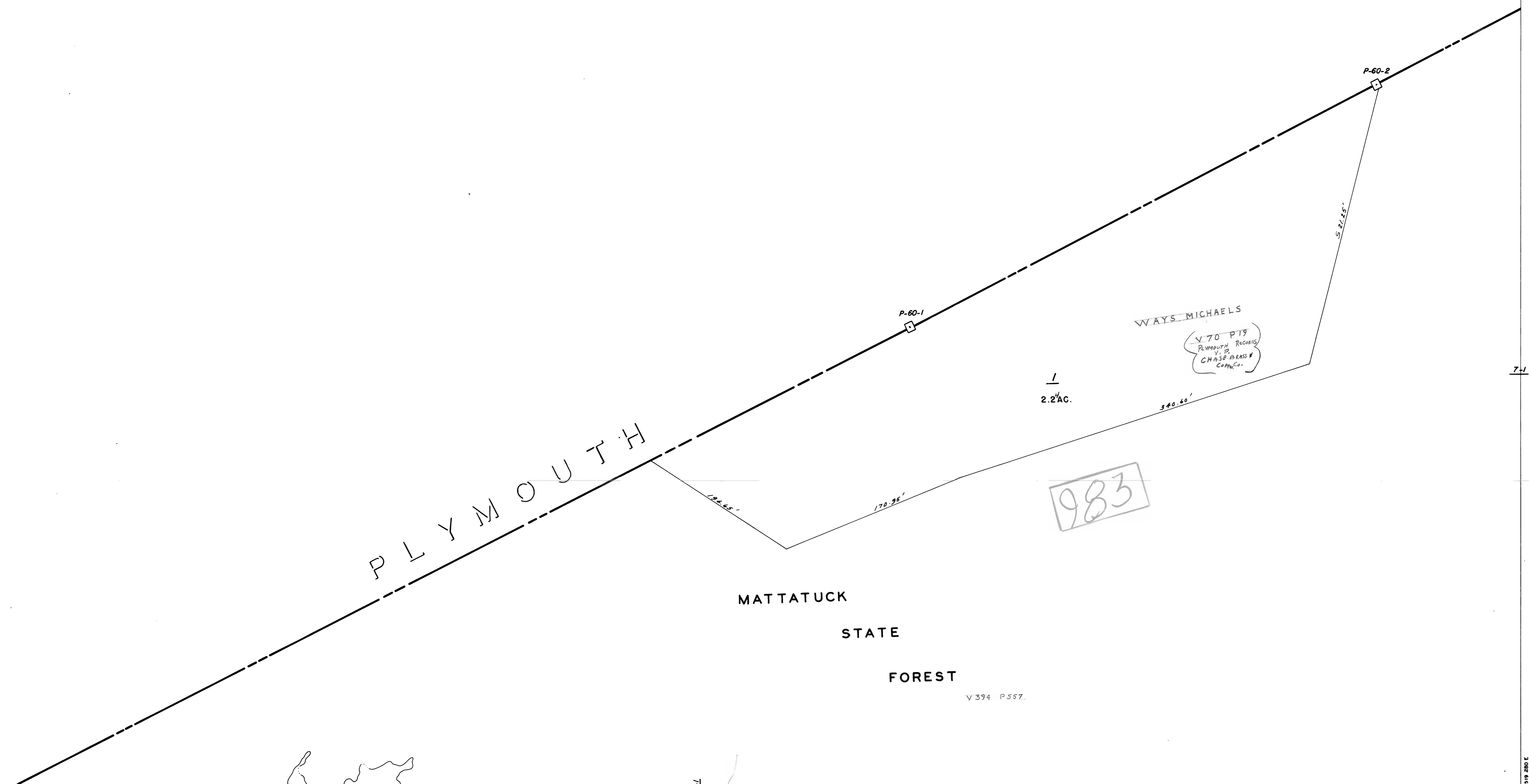


284 100 N
317 780 E
283 100 N
317 780 E

284 100 N
317 780 E
283 100 N
317 780 E



PLYMOUTH

MATTATUCK
STATE
FOREST

2.2 AC.

WAYS MICHAELS
(V70 P19
PLYMOUTH RECORDS
V. P.
CHASE BRASS &
COMP. CO.)

983

340.60'

52.15'

P-60-1

P-60-2

SCALE IN FEET

COL-EAST INC.
BOSTON & PITTSFIELD

		1
	6	7
12	13	14