

WALDEN STREET

WALDEN STREET

261-54

261-55

261-60

261-64

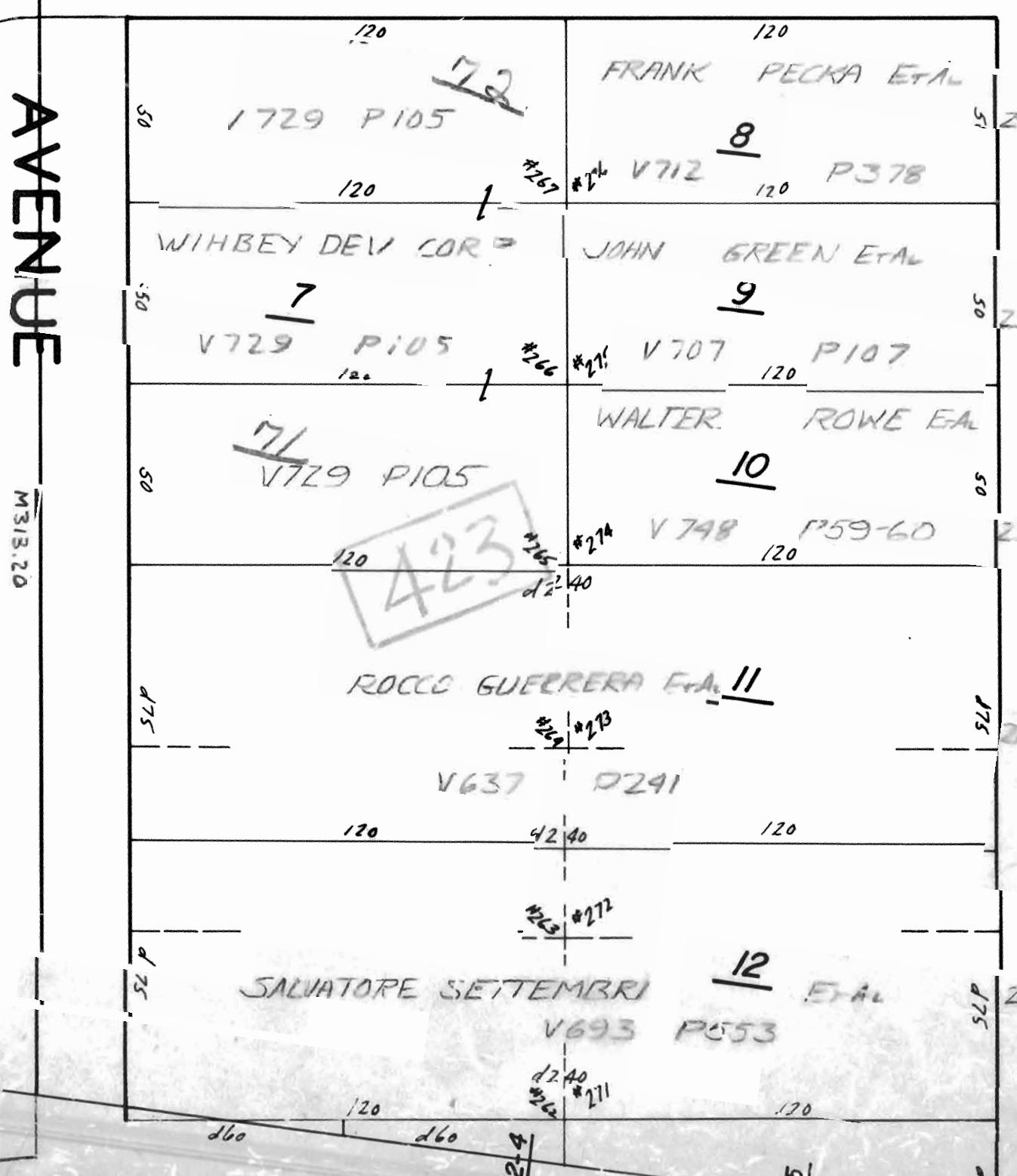
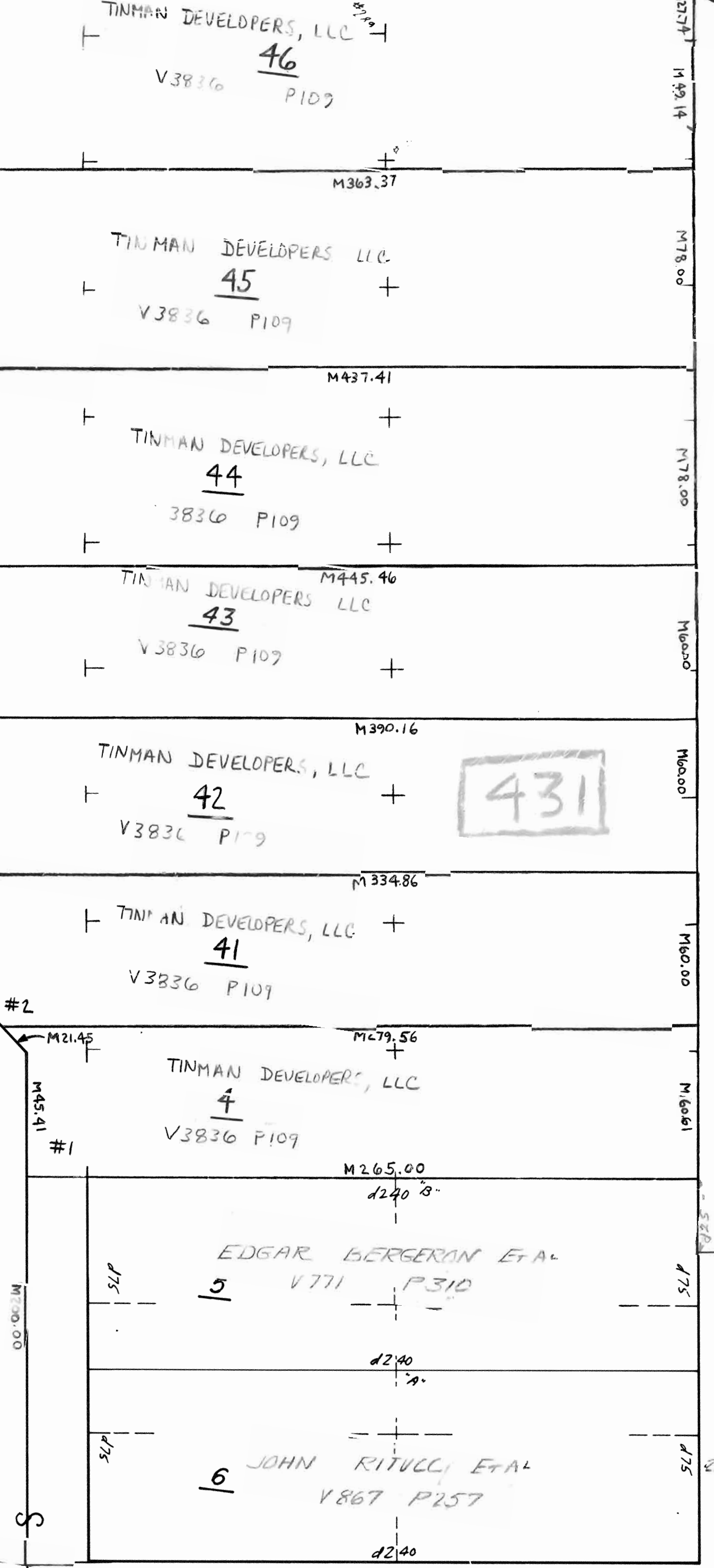
422

ANTHONY F. DIFABIO TRUSTEE
V2129 P49

OFFICIAL MAP
CITY OF WATERBURY
MAY 1985

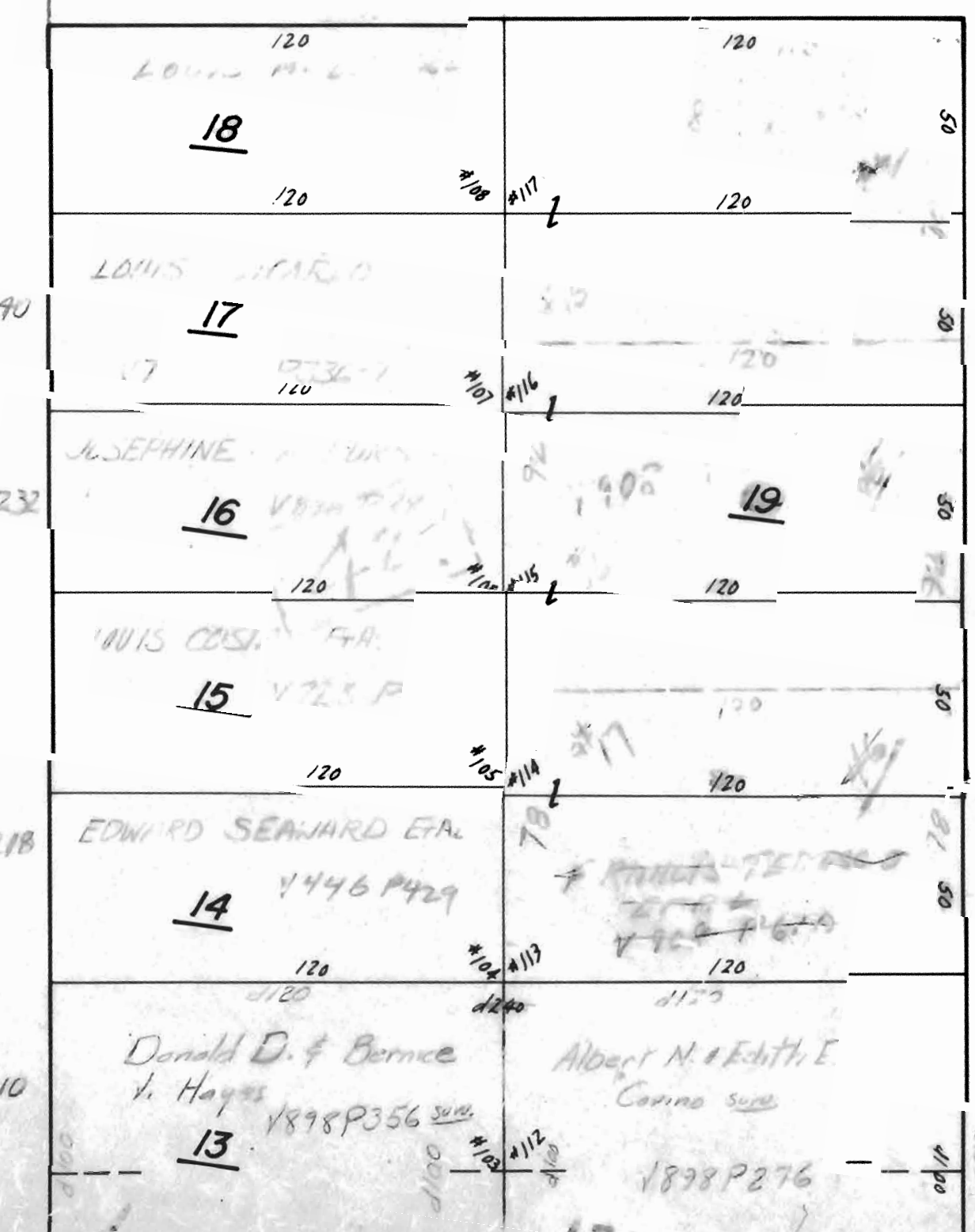
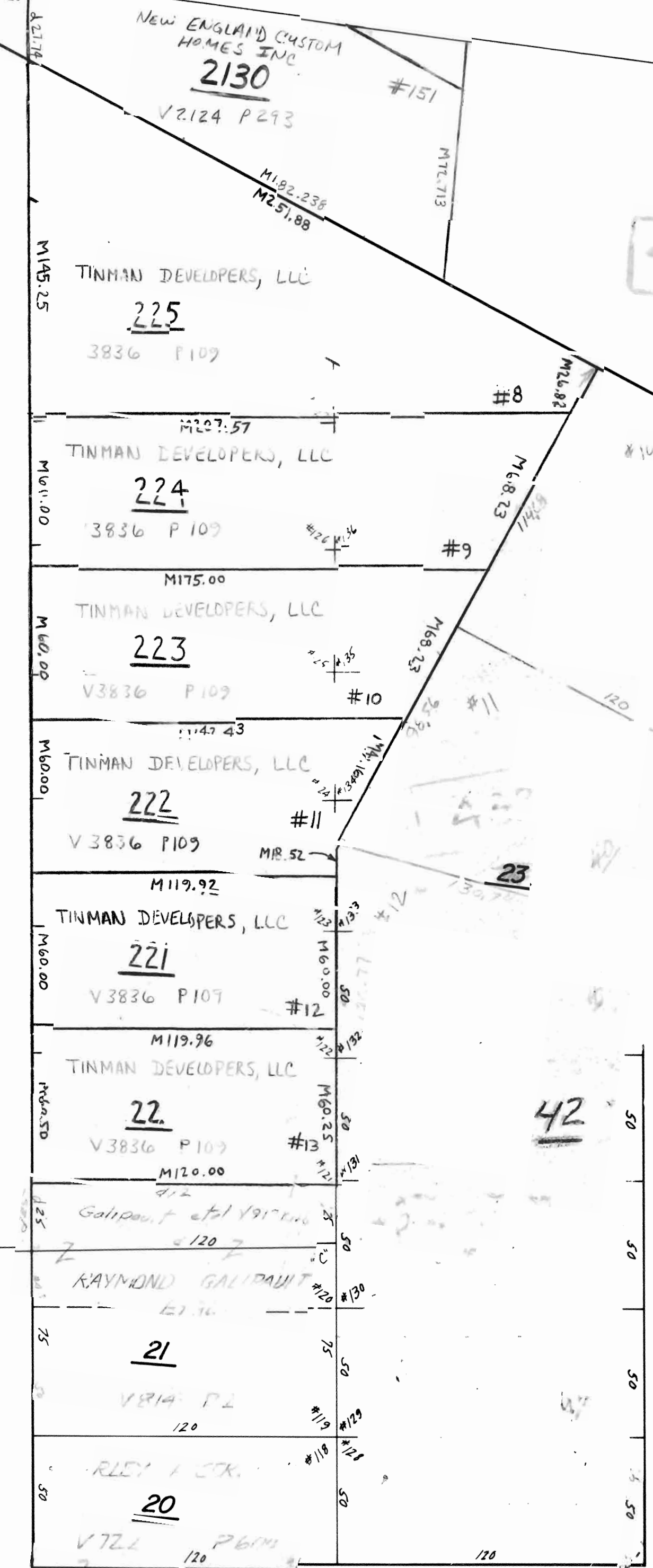
AVENUE

RICHMOND AVE.



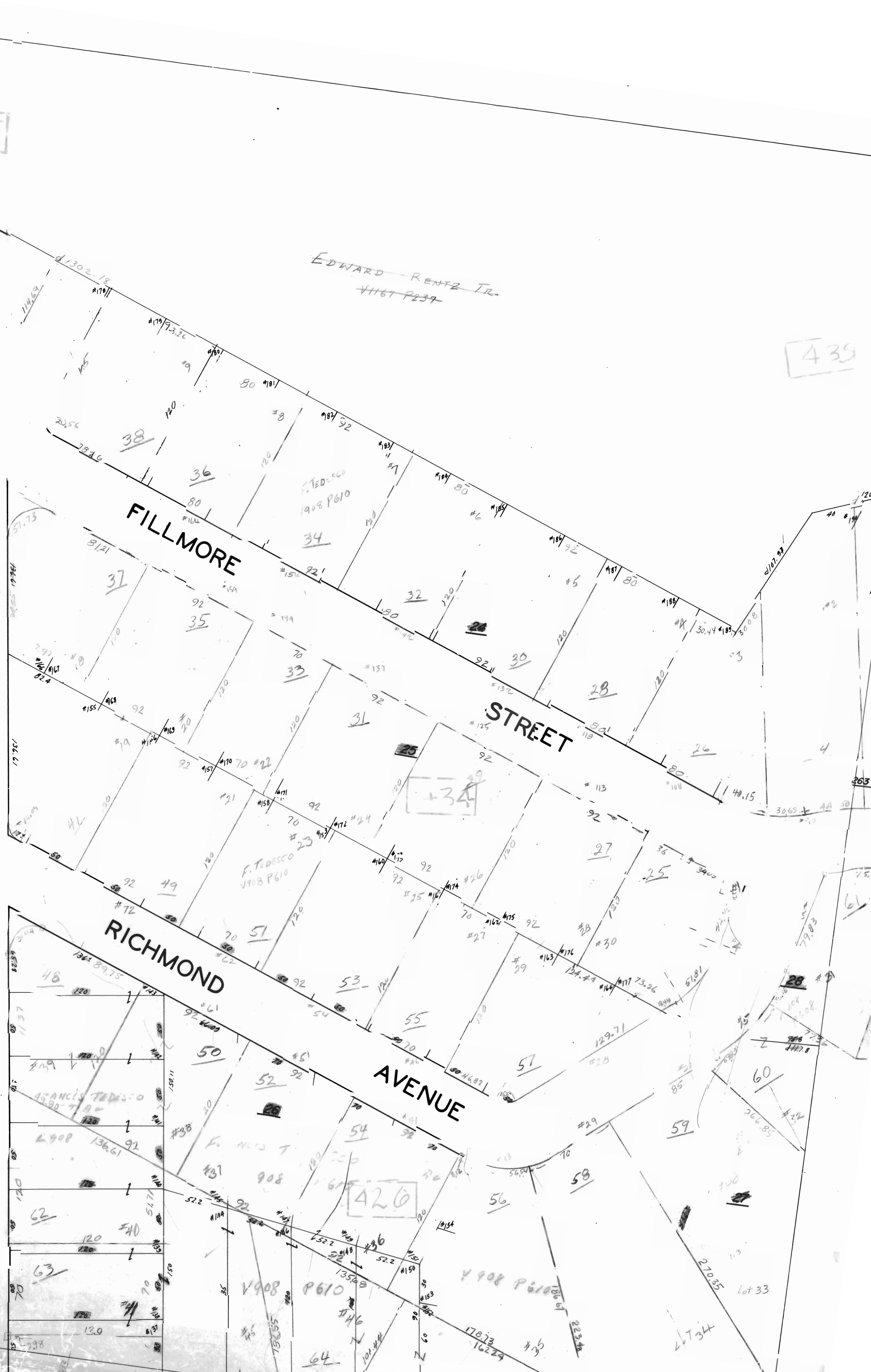
CAPITOL

AVENUE



NATIONAL

AVENUE



FILLMORE

STREET

RICHMOND

AVENUE

435

435

434

426

431

42

423

435

435